



# **Formation of motivational mechanisms of personnel in agricultural enterprises under martial law**

**Dmytro Shyian**

Full Doctor in Economics, Professor

**Yelyzaveta Sevriukova**

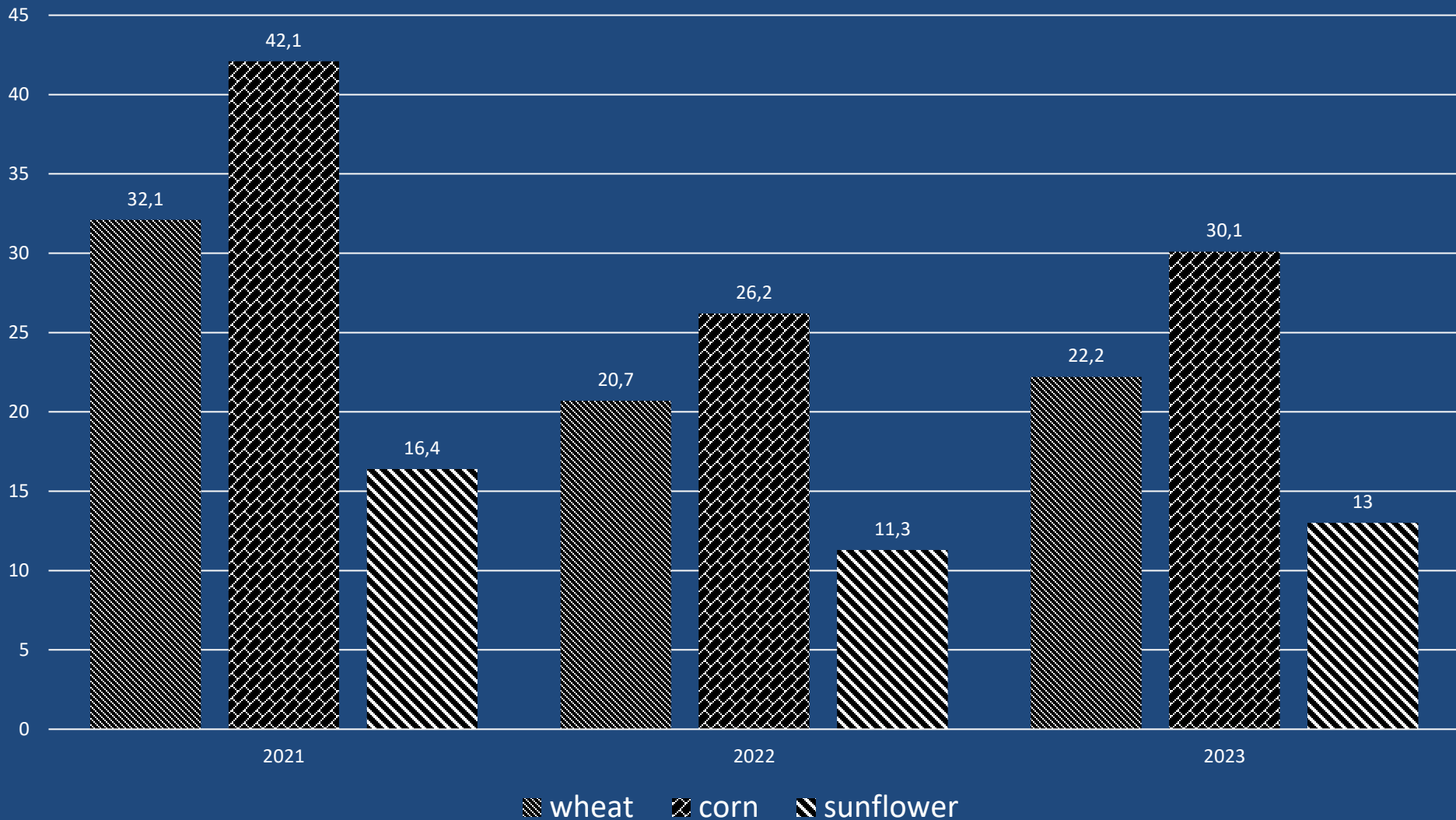
Postgraduate Student

Simon Kuznets Kharkiv National University of  
Economics



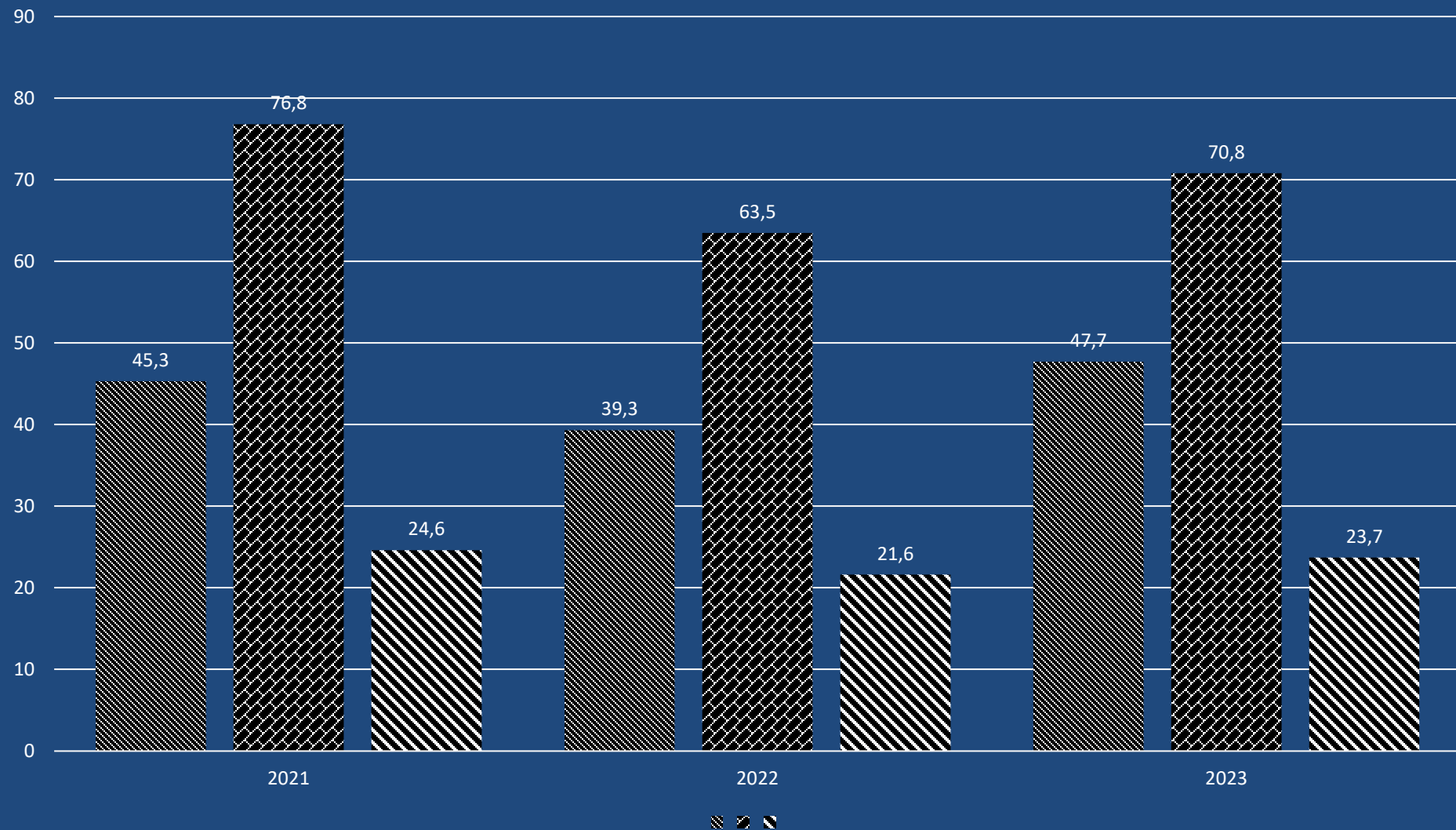


# 1. Dynamics of gross harvests of individual crops in Ukraine in 2021-2023, million tons





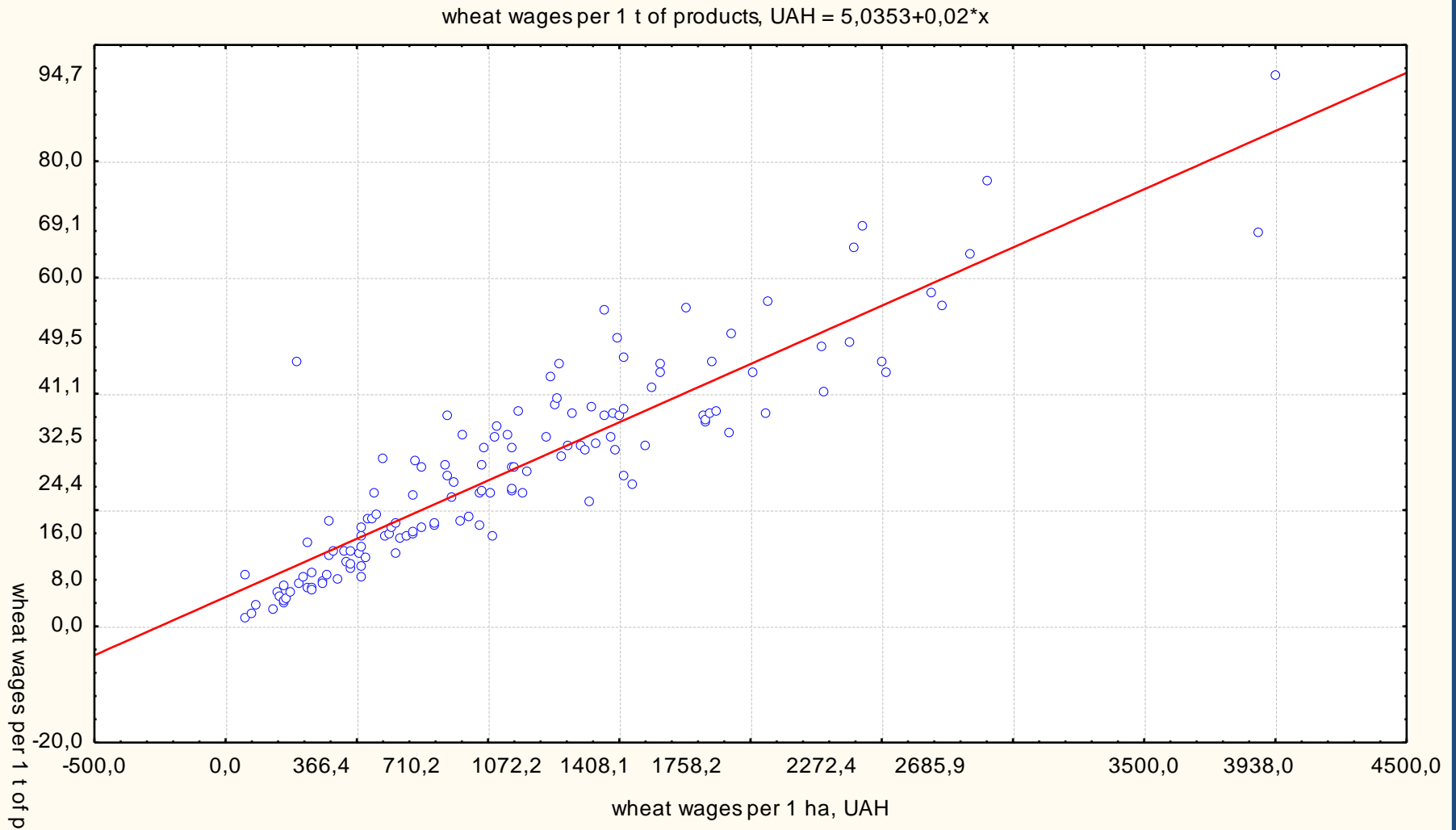
## 2. Dynamics of yield of certain crops in Ukraine in 2021-2023, centner/ha



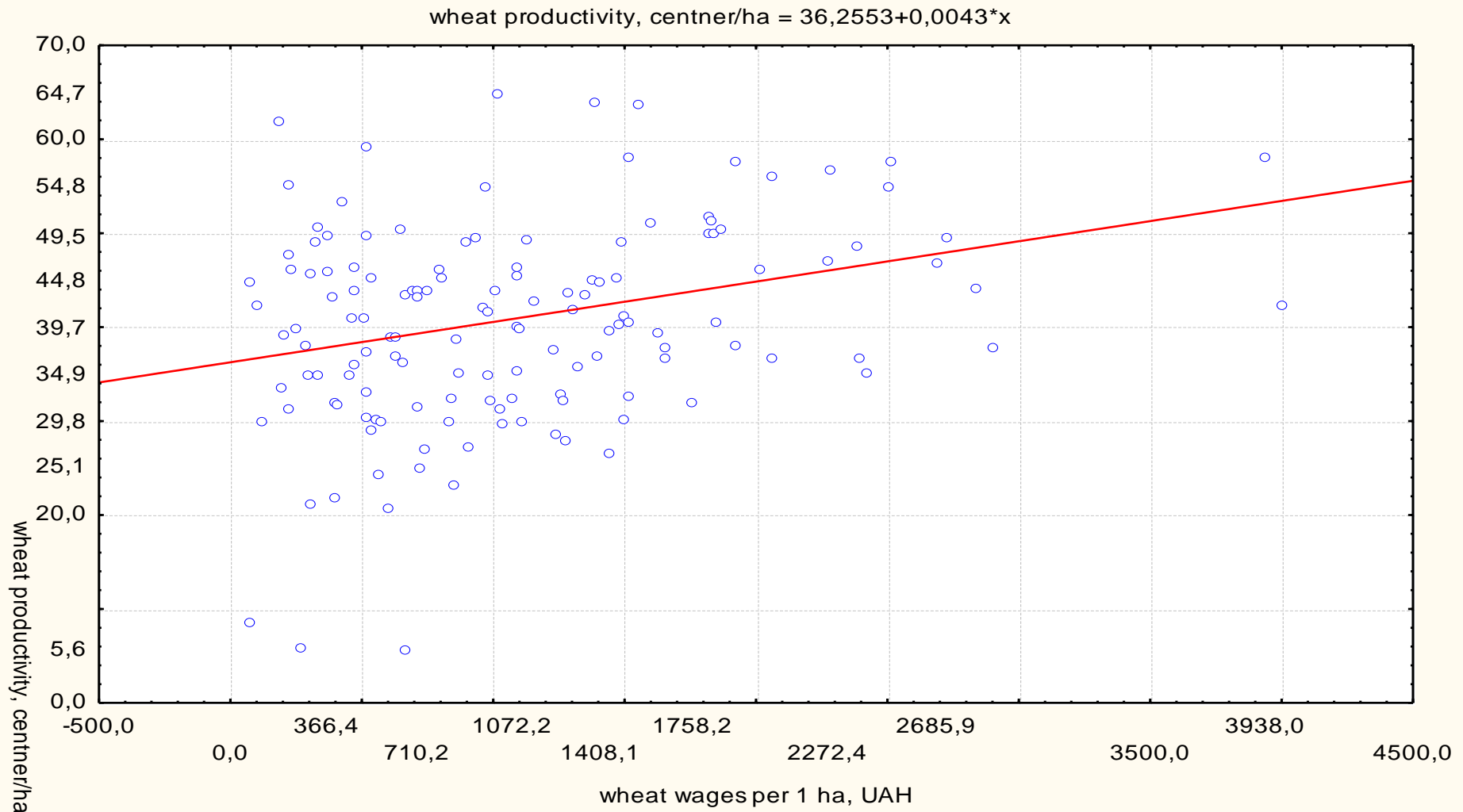
**Table 1.** The influence of individual factors on the amount of labor costs per 1 ha in the cultivation of wheat in agricultural enterprises of the Kharkiv region in 2022

UAH/ha	wages per 1 ha, UAH	specific weight of labor costs in the cost structure, %	wages per 1 c of products, UAH	productivity, c/ha	income per 1 ha, UAH	profit per 1 ha UAH	profitability, %
up to 500	296,6	2,1	8,0	36,9	21308,1	4,6	65,4
500.1-15000	919,4	5,3	24,5	37,5	20334,8	3,6	42,5
1500.1-2500	1840,6	9,7	40,9	45,1	22796,8	2,9	31,3
more than 2500	3476,7	14,1	66,7	52,1	29583,1	5,4	34,0
By region	966,8	5,8	24,6	39,2	21449,2	3,9	46,2

### 3. The relationship between the amount of labor costs per 1 ha of corn sown area and their amount per quintal



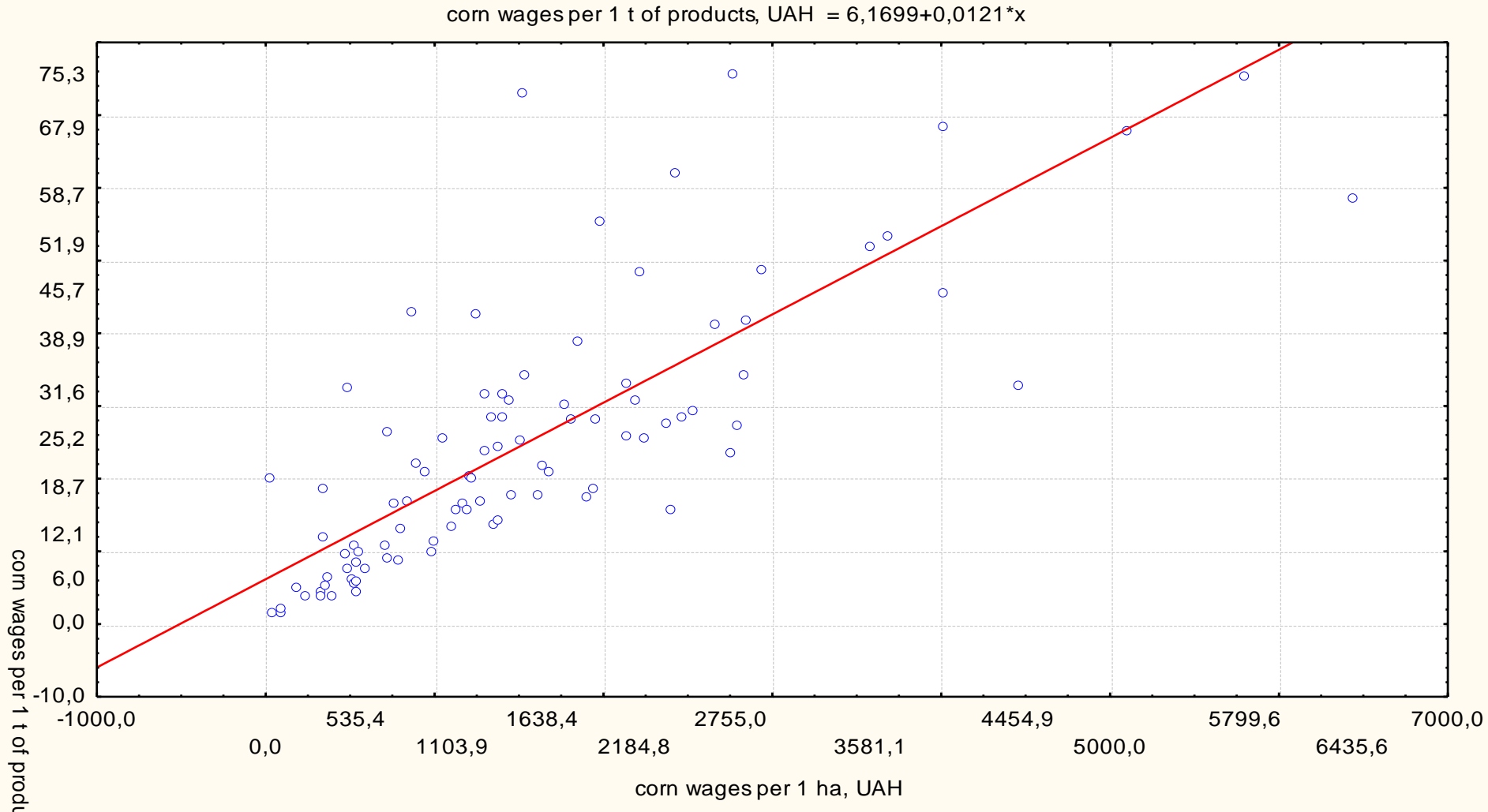
# 4. Dependence between the amount of labor costs per 1 ha of corn sowing area and productivity



**Table 2.** The influence of individual factors on the amount of labor costs per 1 ha when growing corn in agricultural enterprises of the Kharkiv region in 2022

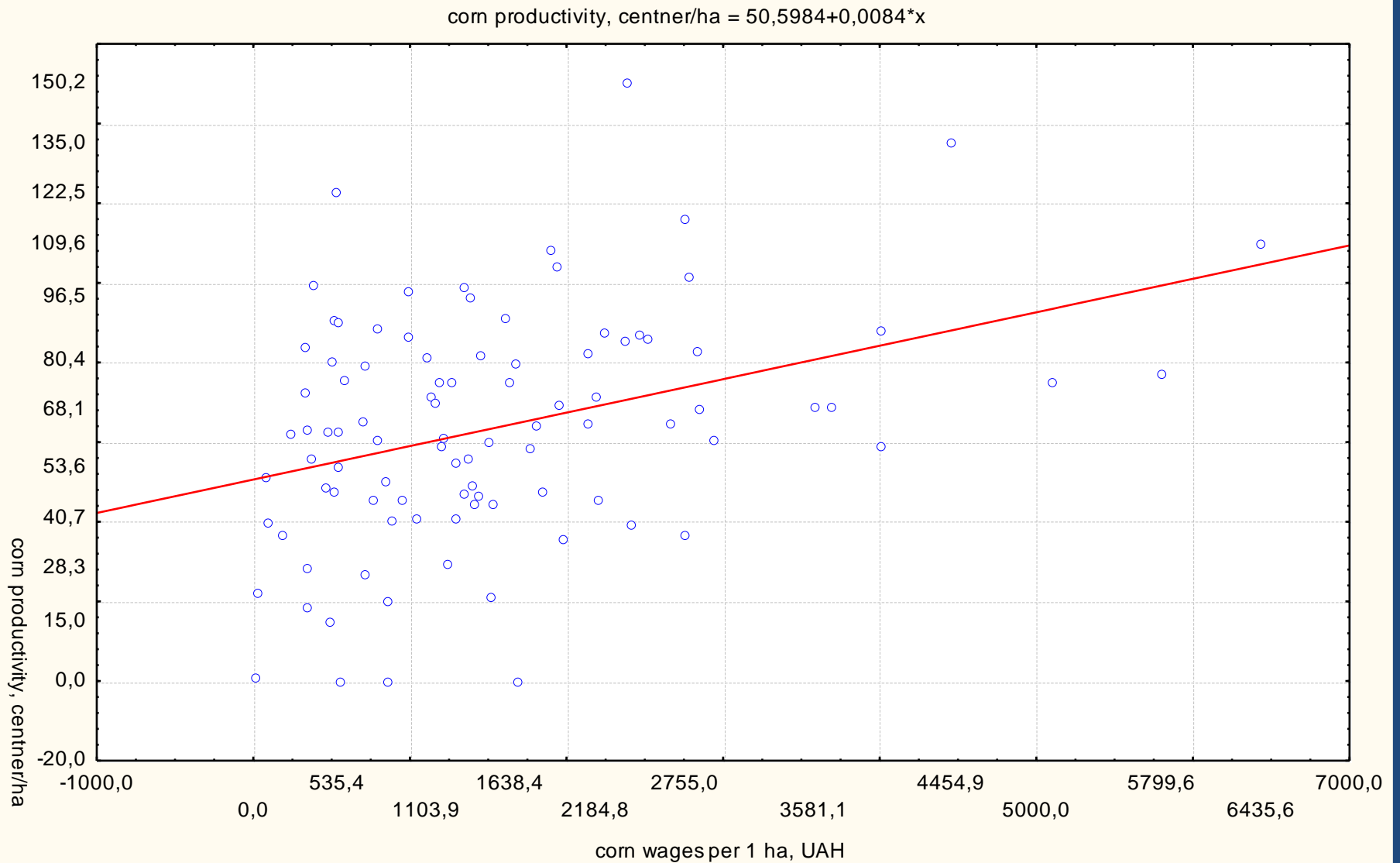
UAH/ha	wages per 1 ha, UAH	specific weight of labor costs in the cost structure, %	wages per 1 c of products, UAH	productivity, c/ha	income per 1 ha, UAH	profit per 1 ha UAH	profitability, %
up to 500	309,7	2,0	5,5	56,7	26288,4	2,6	36,1
500.1-15000	943,0	4,0	13,5	69,8	38968,4	9,3	62,6
1500.1-2500	1976,3	7,1	29,2	67,7	36722,3	6,0	27,6
more than 2500	3866,7	12,4	45,3	85,3	39865,7	2,7	9,7
By region	1451,2	6,0	21,2	68,5	36135,1	6,3	37,3

## 5. The relationship between the amount of labor costs per 1 ha of wheat sowing area and the amount of their costs per 1 quintal





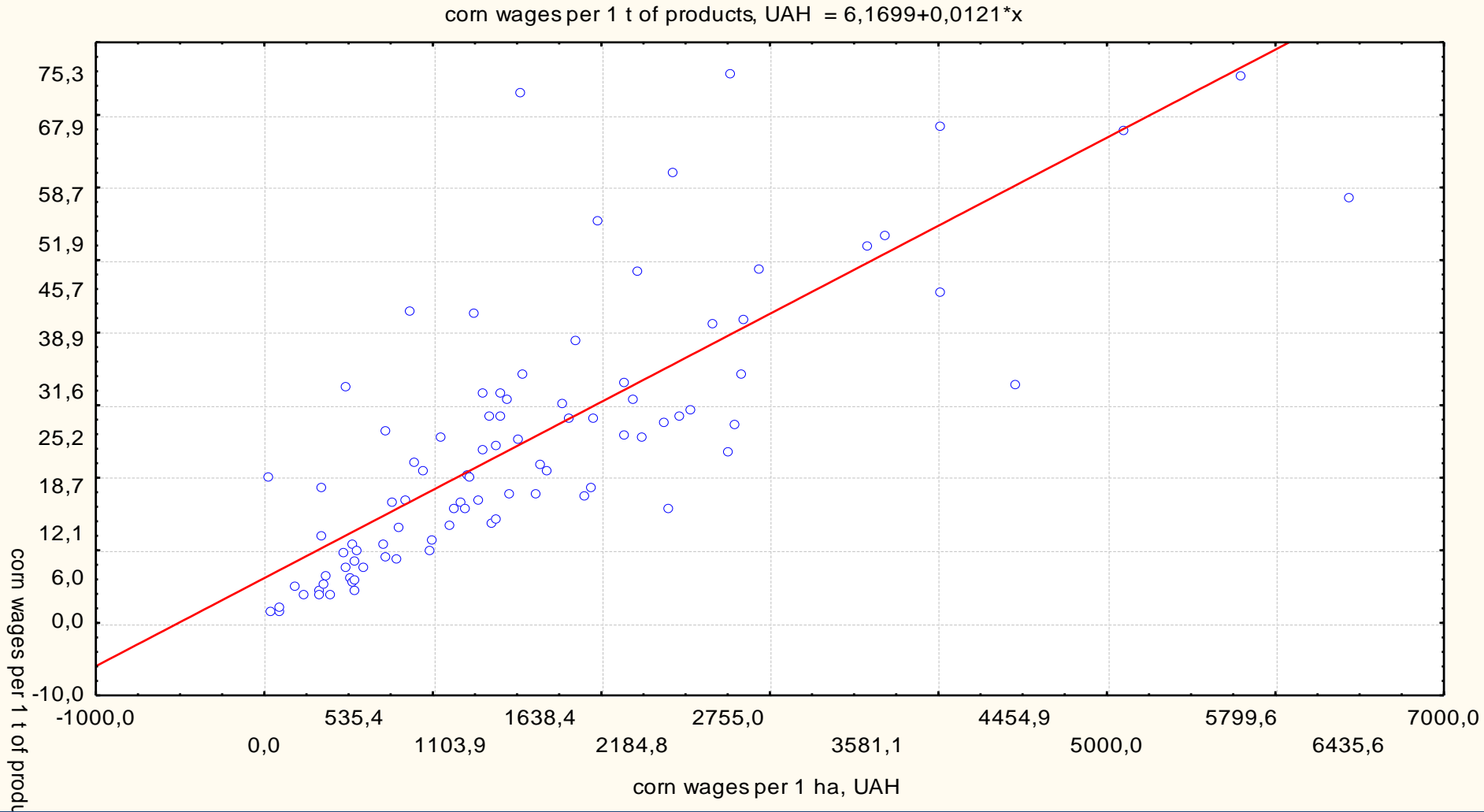
## 6. The relationship between the amount of labor costs per 1 ha of wheat sown area and productivity



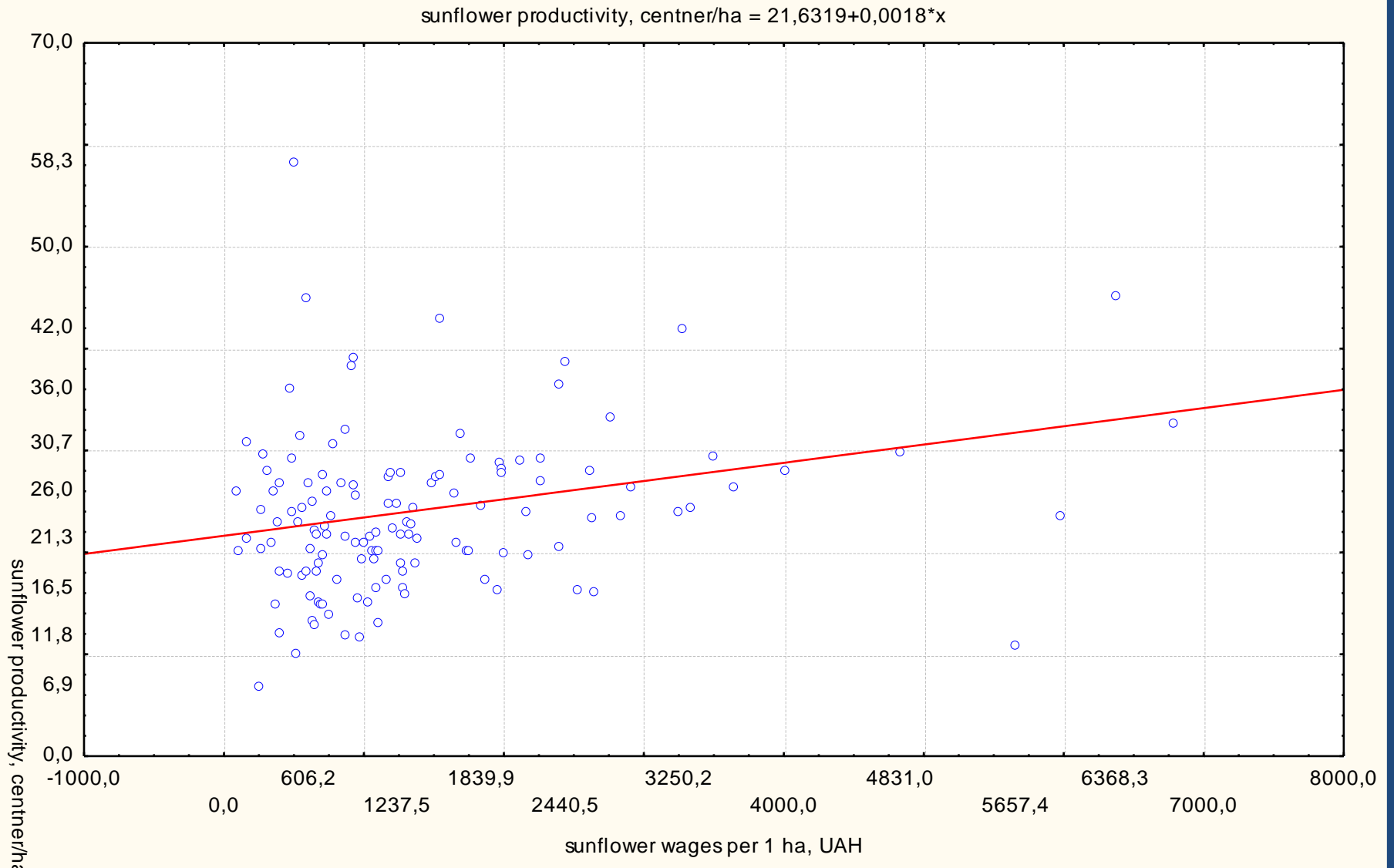
**Table 3.** The influence of individual factors on the amount of labor costs per 1 ha of sunflower cultivation in agricultural enterprises of the Kharkiv region in 2022

UAH/ha	wages per 1 ha, UAH	specific weight of labor costs in the cost structure, %	wages per 1 c of products, UAH	productivity, c/ha	income per 1 ha, UAH	profit per 1 ha UAH	profitability, %
up to 500	310,9	1,7	14,0	22,3	32988,9	12,4	64,9
500.1-15000	911,2	4,7	40,9	22,3	31709,2	10,4	67,2
1500.1-2500	1979,2	8,9	78,8	25,1	34400,3	12,1	64,8
more than 2500	3578,6	14,4	139,6	25,6	38404,6	10,5	48,0
By region	1279,9	6,3	55,2	23,2	33237,0	11,2	63,7

# 7. The relationship between the amount of labor costs per 1 ha of sunflower sowing area and their amount per quintal



# 8. The relationship between the amount of labor costs per 1 ha of sunflower sowing area and their amount per quintal





**Thank you for attention!**